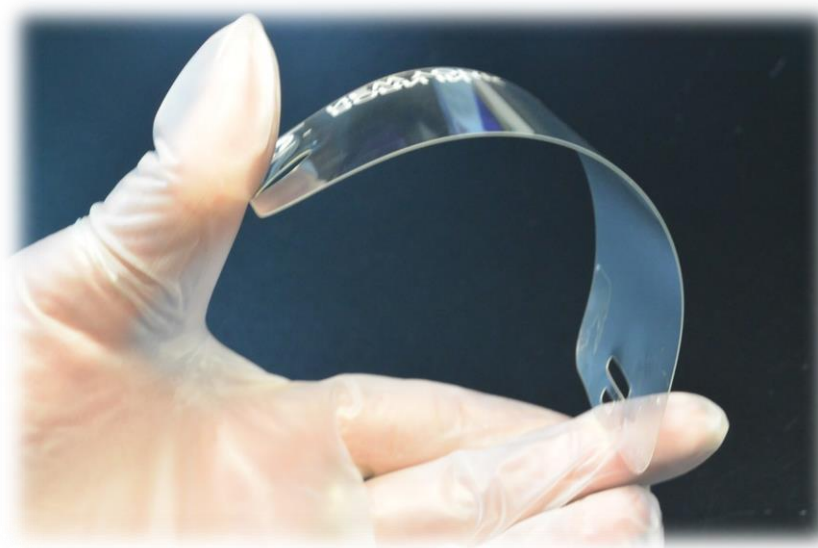
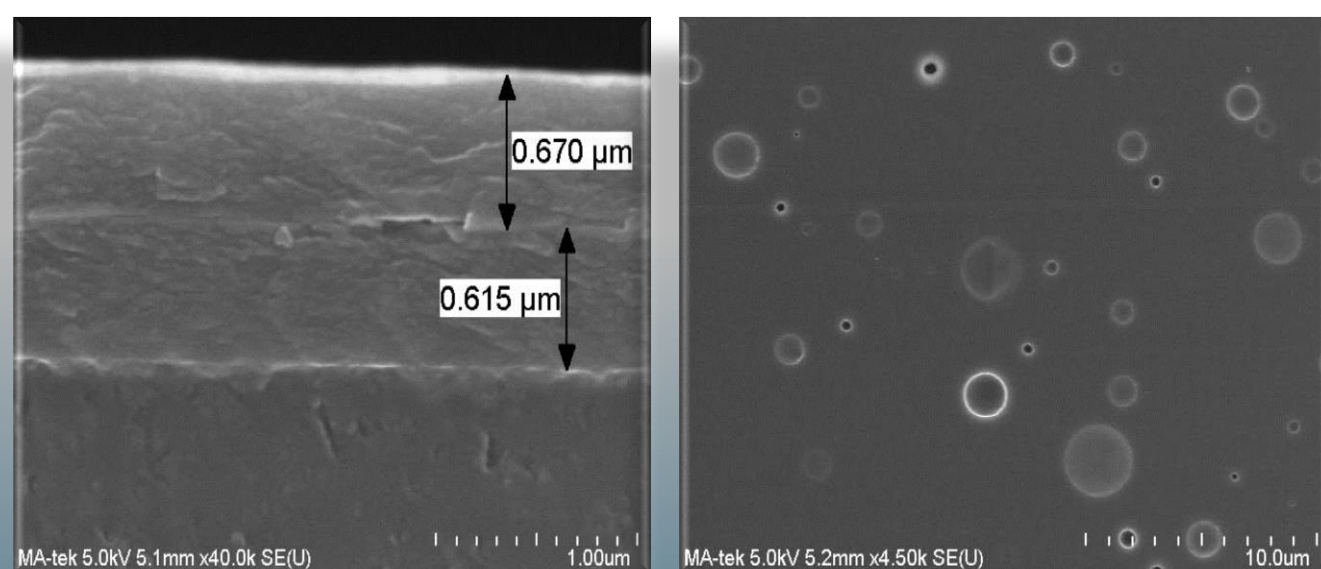


Polymer Film Analysis



OLEDs film from digital display

SEM



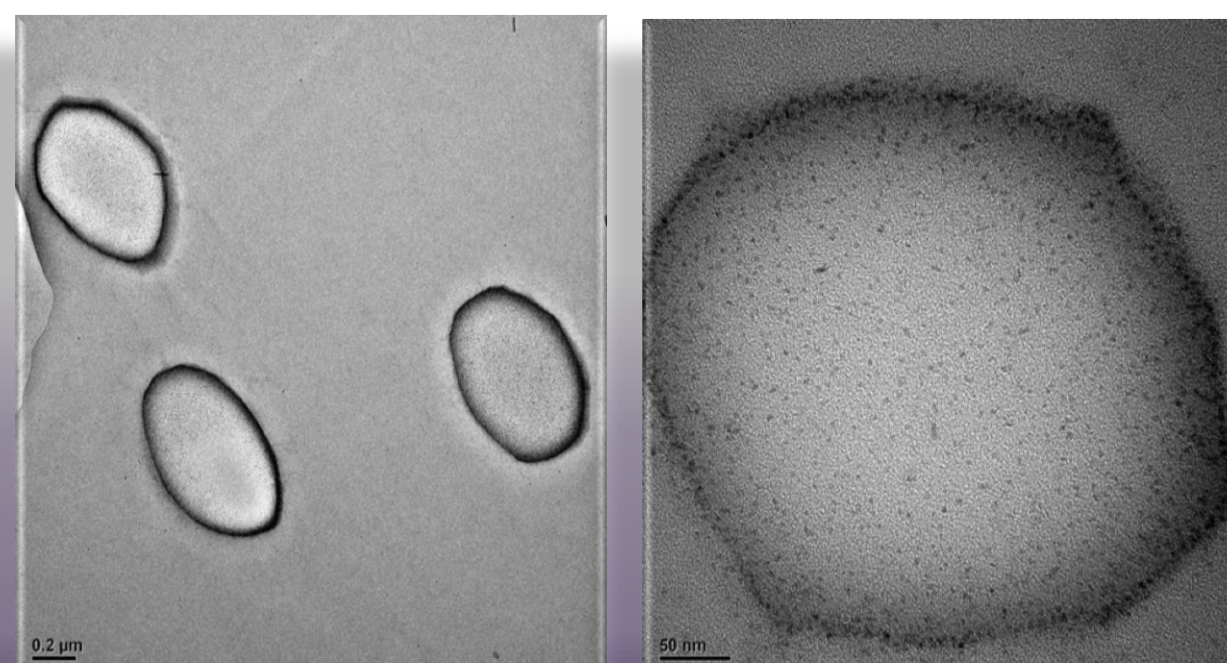
OLEDs film Cross-section -overview from layer to layer- Cryo-milling service:

Prevents polymer film from heat damage of mechanical milling and creates flat and complete cross-section of OLED film for SEM analysis

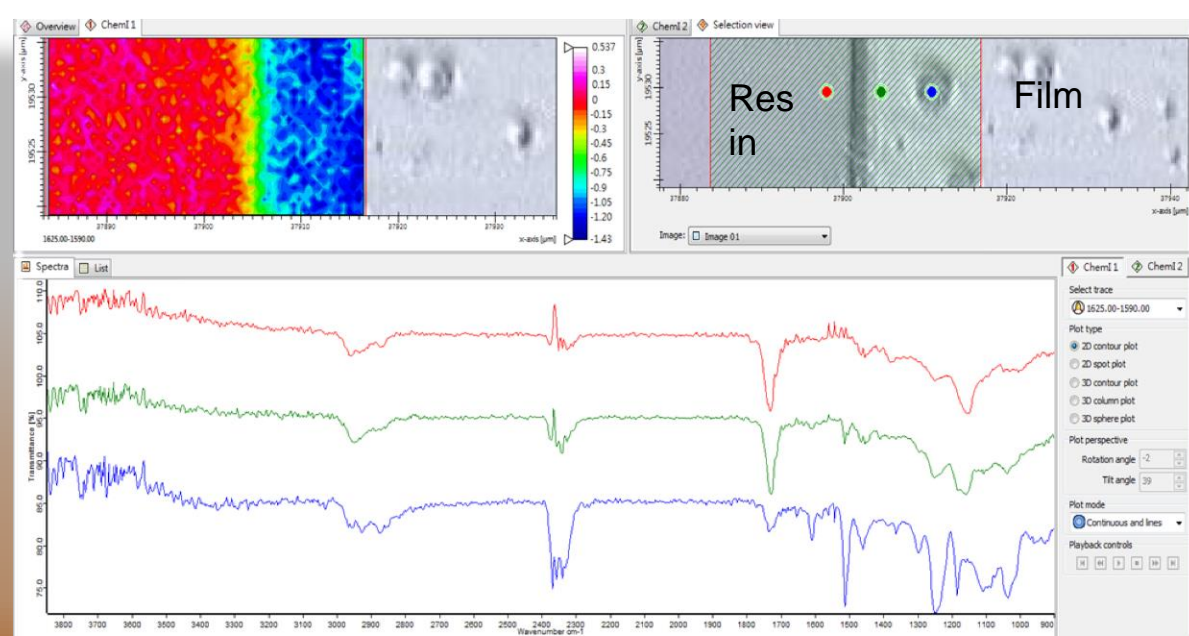
TEM

QDs Distribution in OLEDs film -micro to nano scale analysis- Cryo-ultrasection service:

creates ultrathin section of OLEDs film for fine structure analysis by TEM



FTIR



Organic layer characterization -mapping for layers-

Epoxy embedding and milling service:

creates flat and supported cross-section of OLED film for micro-FTIR analysis

Contact window: **Eva Chen** _ service@bioma-tek.com
Lin-Ai Tai _ project@bioma-tek.com

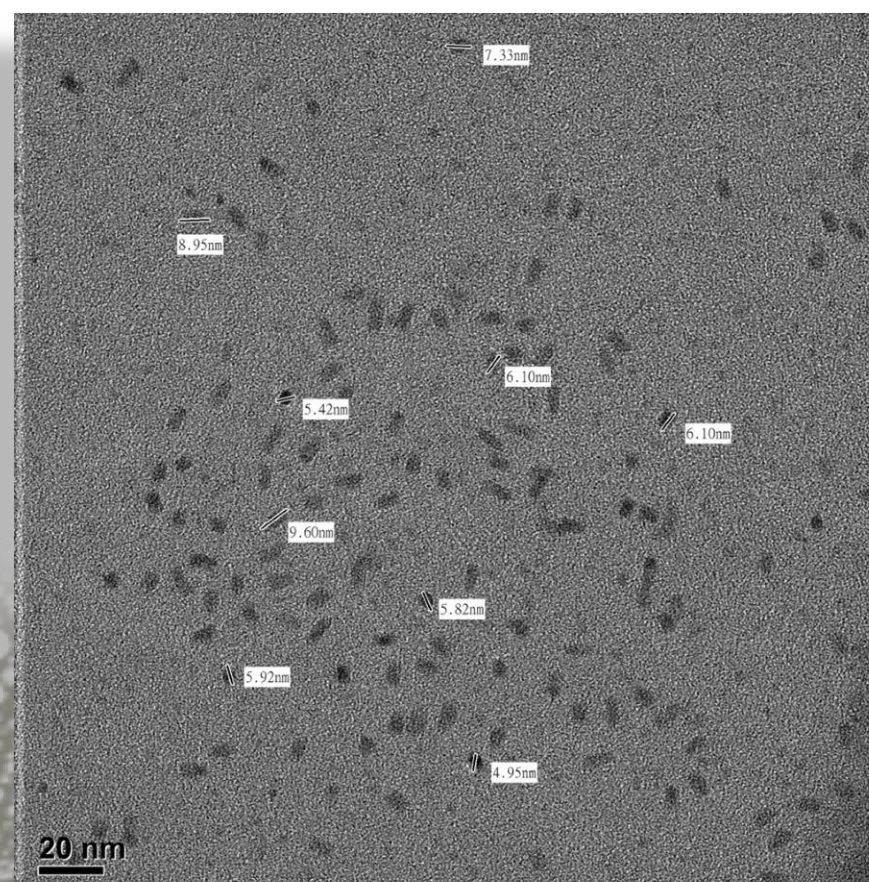
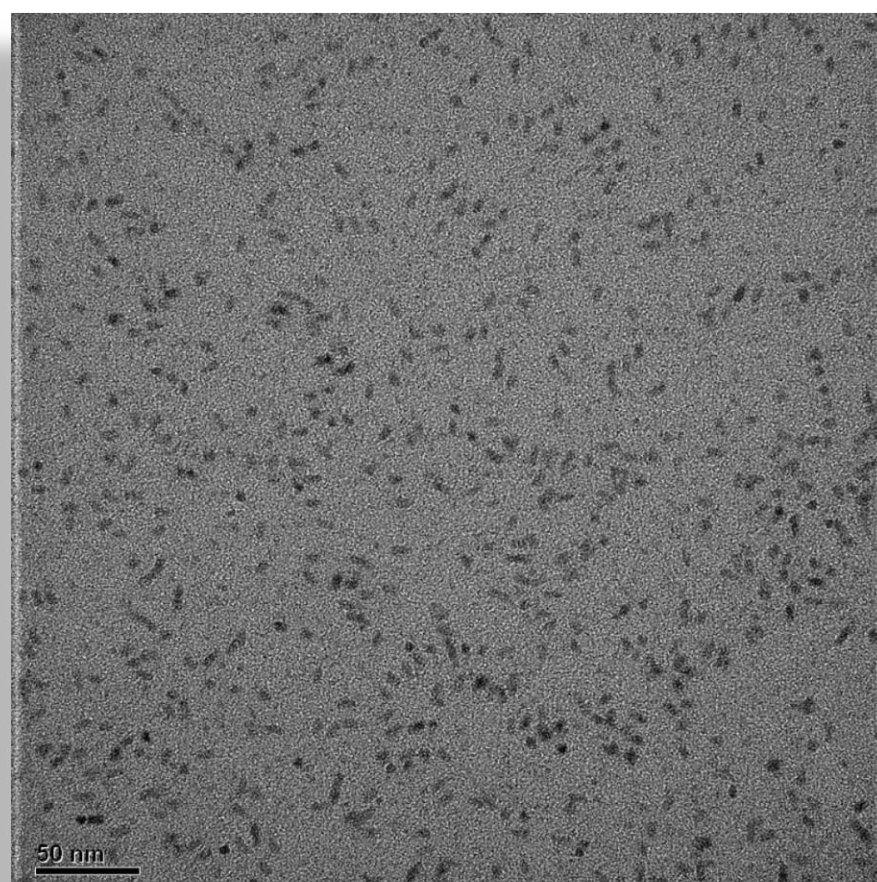
Polymer Films: Material Analysis

Raw Materials, Components and Final Products

Nano particles size, shape and elements characterization

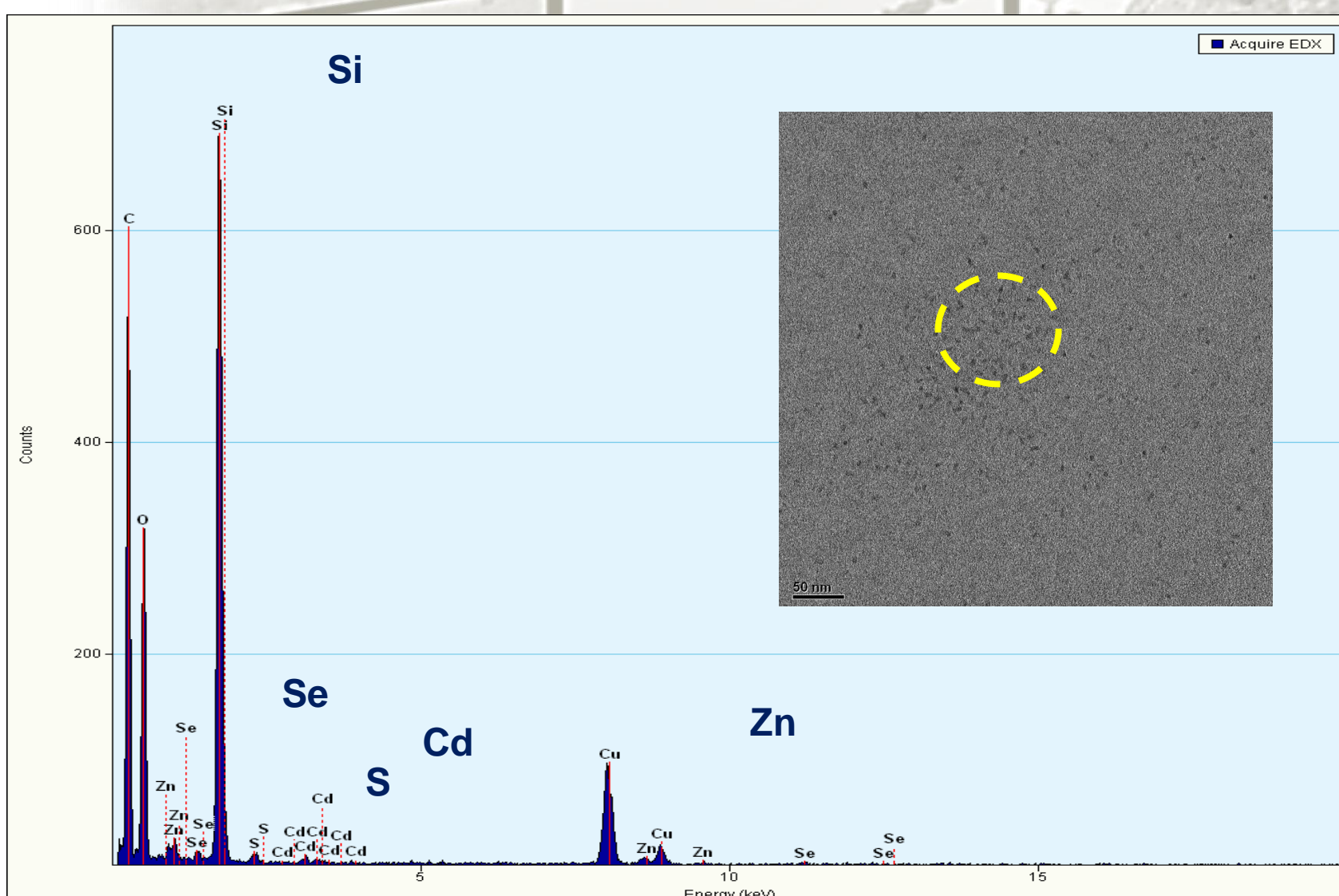


Quantum dots for OLEDs, transistors, solar cell etc.



TEM Analysis

Size and shape characterization



EDX Analysis

Elements identification

Contact window: *Eva Chen* _ service@bioma-tek.com
Lin-Ai Tai _ project@bioma-tek.com