

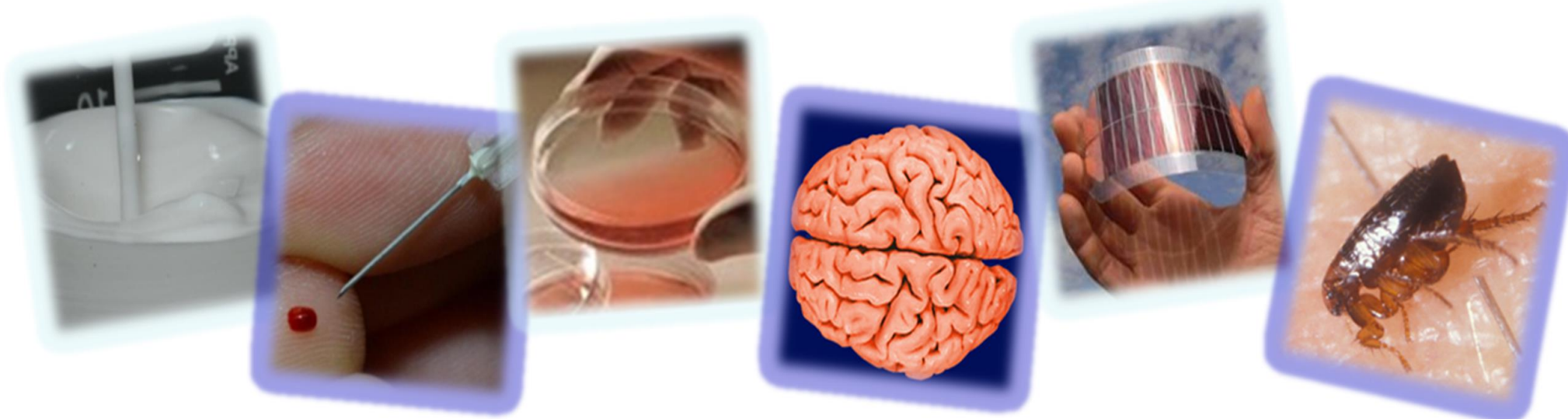
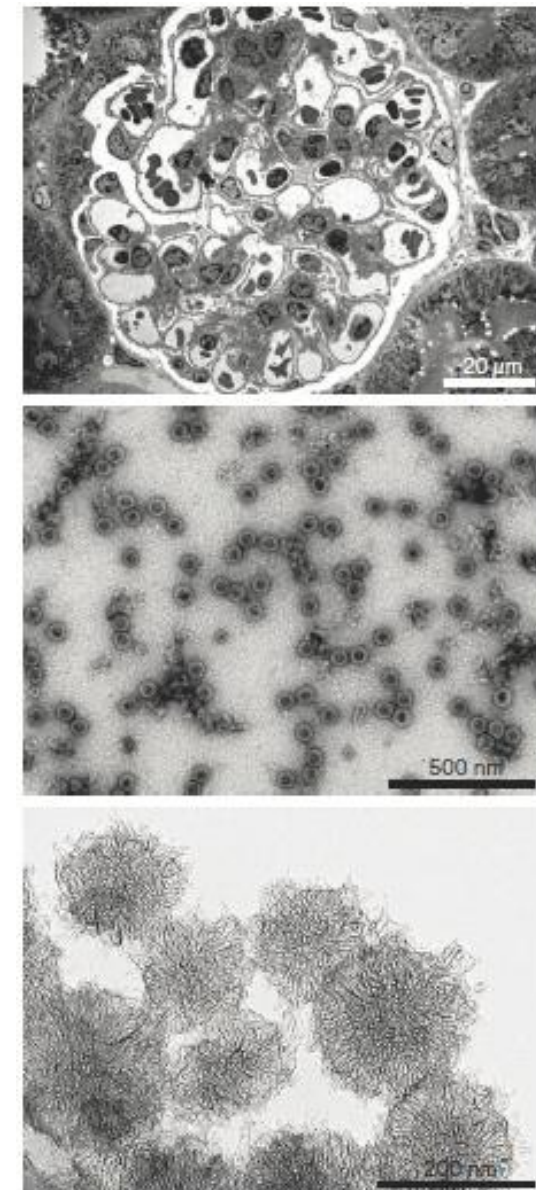
Electron Microscopy Analysis Service

- Expertise on specimen prepare of biological samples

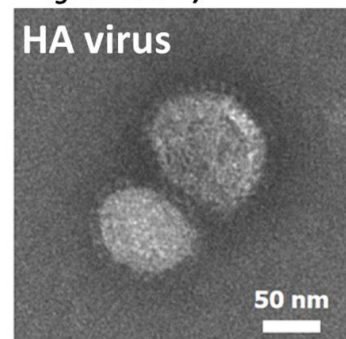
High contrast Bio-TEM, Hitachi HT-7700 is now available !!

Reliable qualities of sample preparations, including:

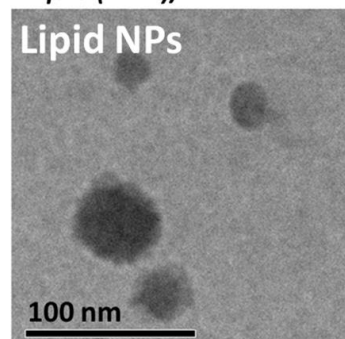
resin embedding, ultra-sectioning, cryo-ultrasectioning, negative staining, Cryo-TEM etc.



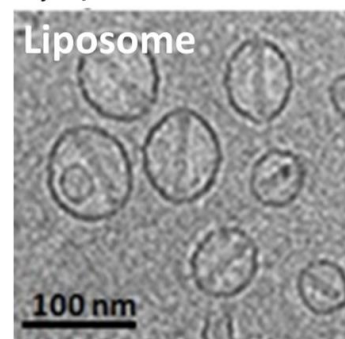
Negative stain/TEM



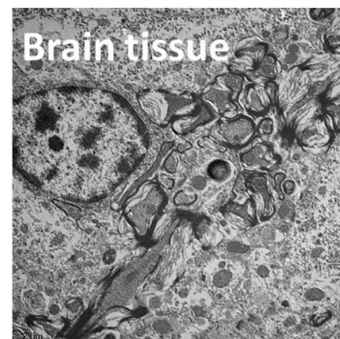
Liquid (K-kit)/TEM



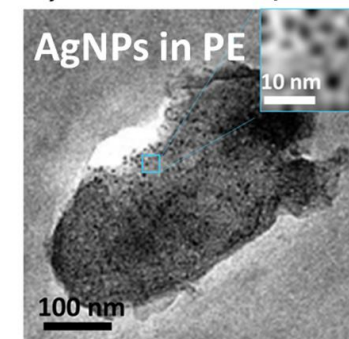
Cryo- /TEM



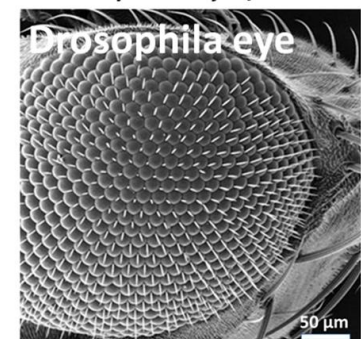
Ultramicrotome/TEM



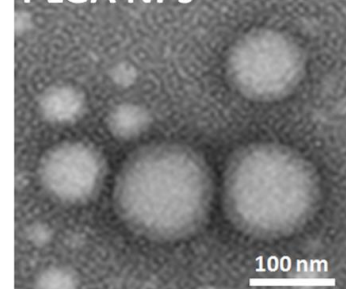
Cryo-ultramicrotome/TEM



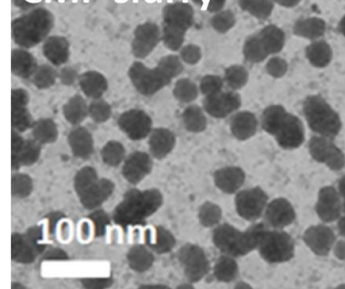
Critical point dryer/SEM



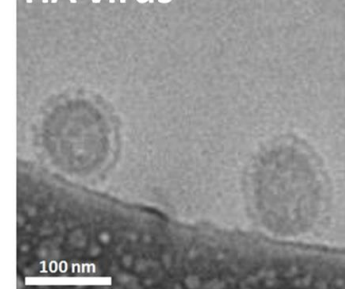
PLGA NPs



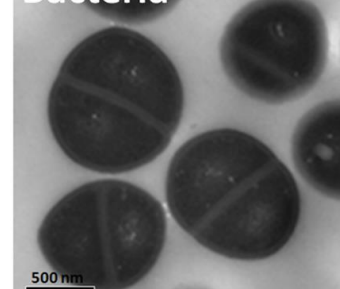
CMP slurry



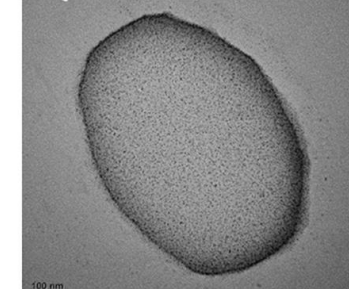
HA virus



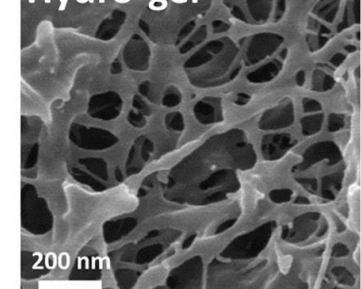
Bacteria



QLED film



Hydro-gel



Contact window: Ruby Chai: sales@bioma-tek.com
 Eva Chen: service@bioma-tek.com

Electron Microscopy Analysis Service

- *Ultrastructure of Liver and Morphology of Nanopharmaceuticals*

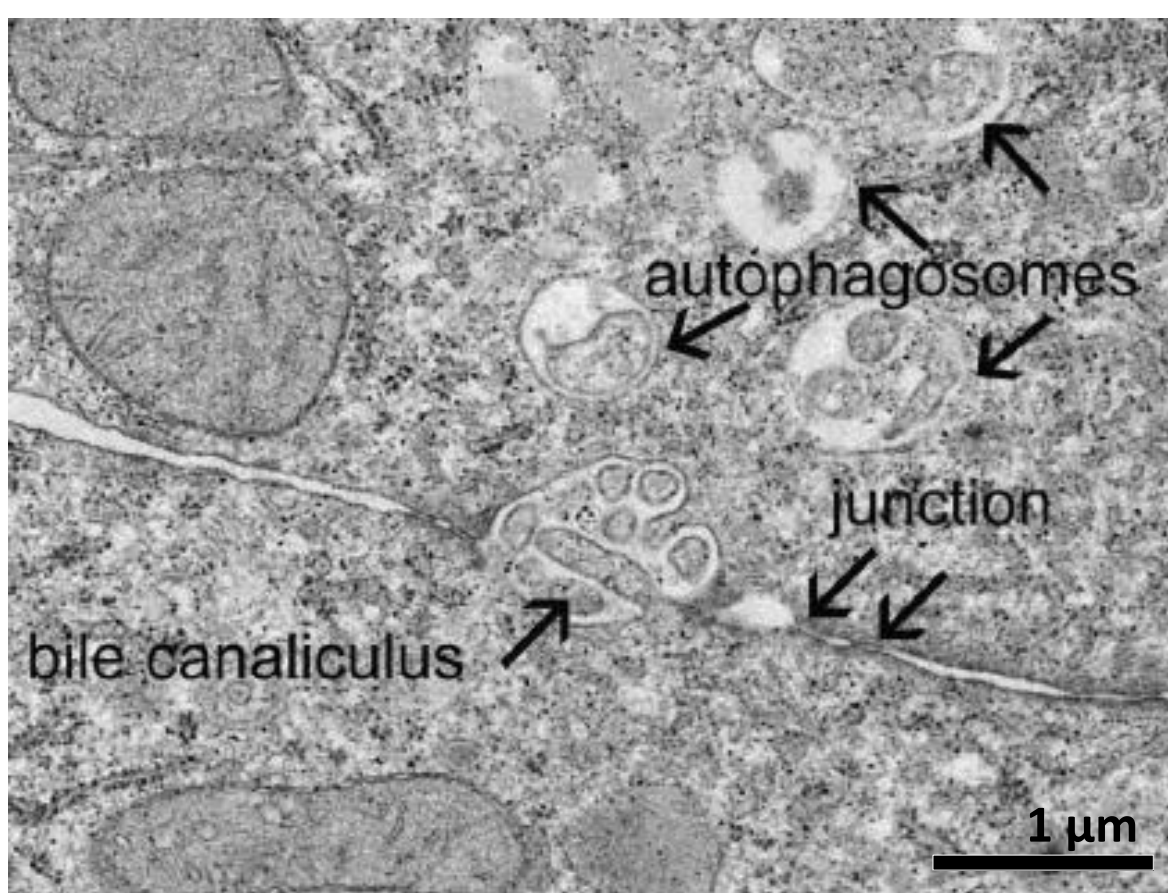
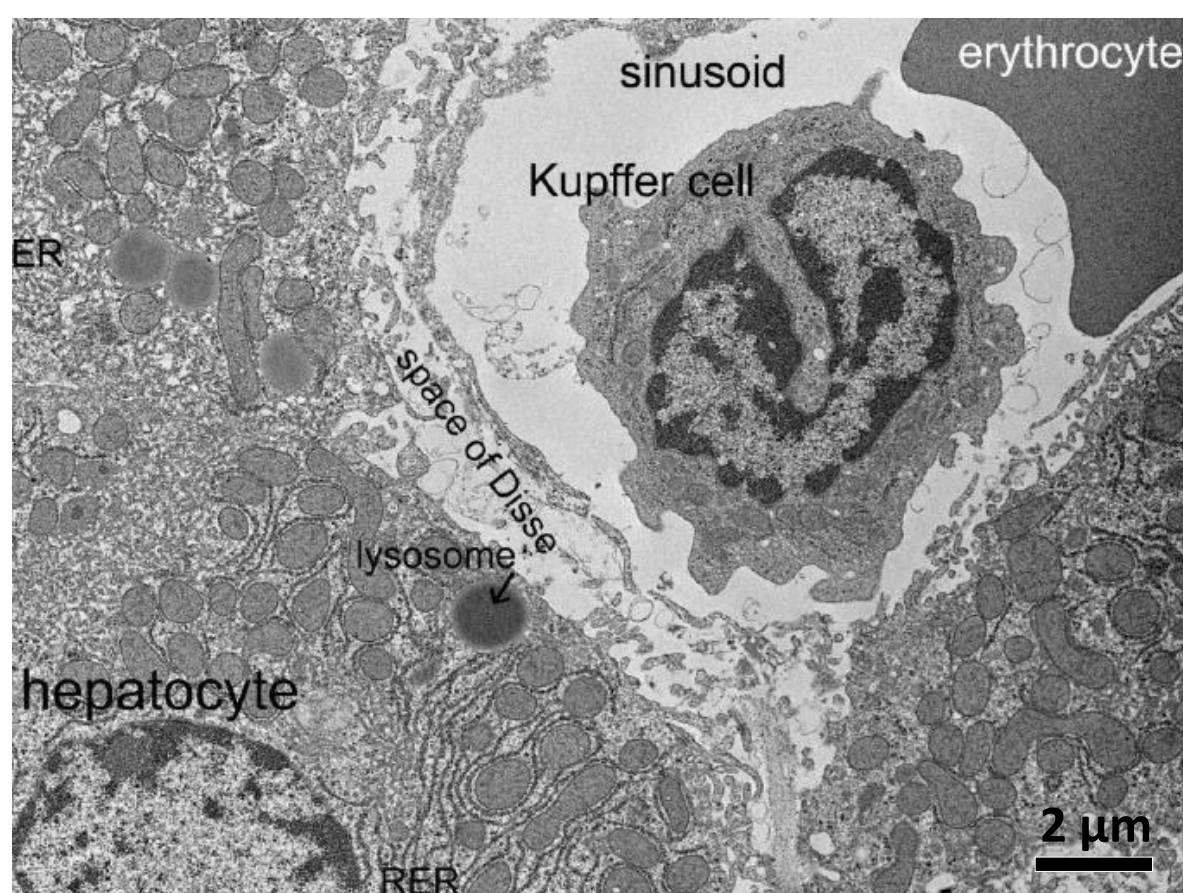
High contrast Bio-TEM, Hitachi HT-7700 is now available !!

Reliable qualities of sample preparations, including:

resin embedding, ultra-sectioning, cryo-ultrasectioning, negative staining, Cryo-TEM etc.

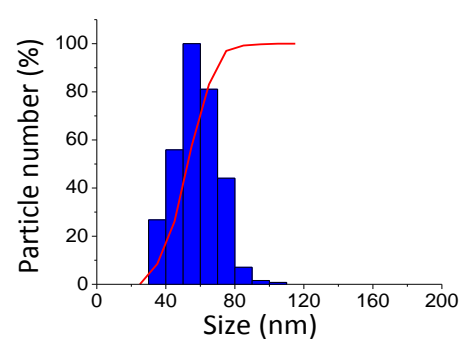
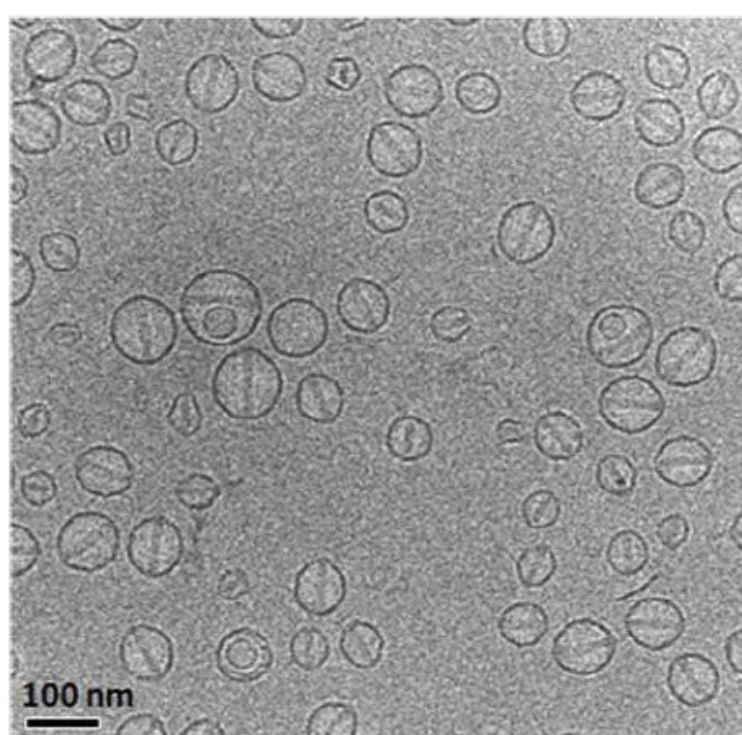
Resin embedding and Ultra-sectioning (Rat/Liver)

Ultra-structures of organelles in cells and tissues are well preserved by sample preparation and clearly studied by TEM analysis



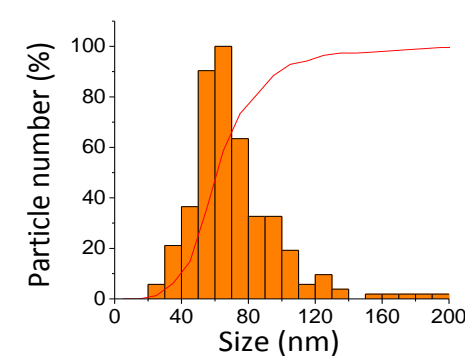
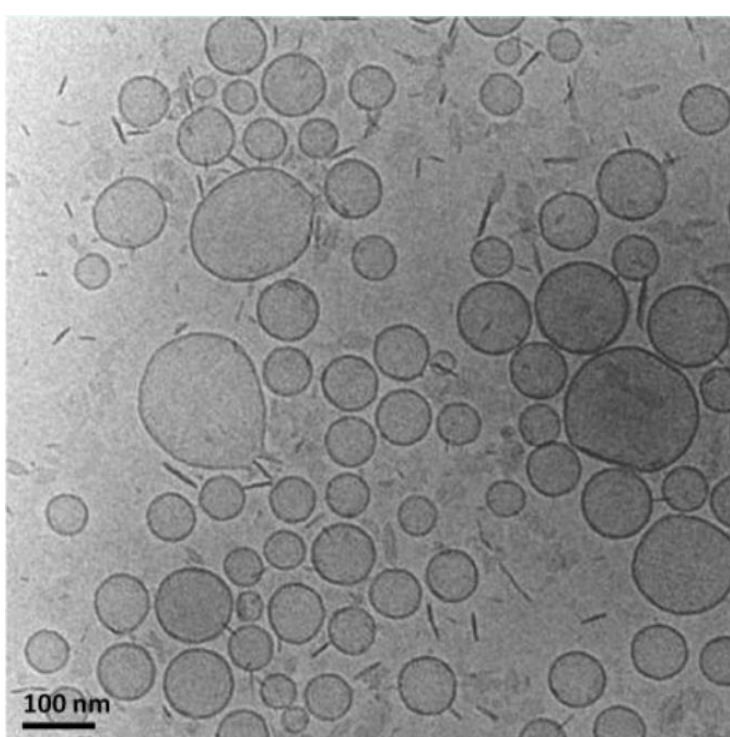
Cryo-TEM (Doxorubicin@liposome)

Provides hydrated morphology information closed to native state



Original

Stock solution



Leakage condition

Probe type ultrasound
22.5 kHz, 2hr, 37°C
Continue mode, 0.02W

Contact window: Ruby Chai: sales@bioma-tek.com
Eva Chen: service@bioma-tek.com